

en/SoftwareUpdate-old

9

LotharF
MikroKopter.de

This page as an PDF-Document ? Click on that Symbol and wait a little moment... --->

MikroKopter-Software

Software Update

-  [deutsch](#)
-  [français](#)

Inhaltsverzeichnis

1. [Software-Update](#)
 1. [Where to get the Hex-Files?](#)
 2. [Connecting the modules](#)
 1. [Connection example at MikroKopter / MK-Tower](#)
 2. [Examples for connecting individual modules](#)
 3. [The Updates](#)
 1. [FlightCtrl / NaviCtrl / MK3Mag](#)
 2. [BL-Ctrl](#)
 4. [Update failed - what now?](#)
 1. [File corrupted](#)
 5. [Solution after faulty update](#)
-

Software-Update

On all [MikroKopter](#) boards (FlightCtrl, NaviCtrl, etc.) there is a boot loader. This make's it simple to update the software.

You only need a [MK-USB](#) (or for older PC's the [SerCon](#)) for the update.
So you can update easy all the boards (like FlightCtrl, NaviCtrl, MK3Mag, ...).
How to set up and connect the MK-USB it is described here: [MK-USB](#)

If you open a updatefile, the [KopterTool](#) detects automatically (on the file name) which file it is and for what this board is used.

So for example if you try to program the [NaviCtrl](#) firmware into the [FlightCtrl](#), it will give you an error message.

Important

If you use a Micro SD-Card in your [NaviCtrl](#), clear after an Update of the [NaviCtrl](#) the SETTINGS.INI on the SD-Card.

This .ini contains some needed values. The new Software will set a new file with the needed values automatically after a restart.

Here a Video who show's you the update:

Where to get the Hex-Files?

The current software of the individual components can be downloaded easily over the [KopterTool](#). This describes how to download the files via the [KopterTool](#): [Software Download](#)

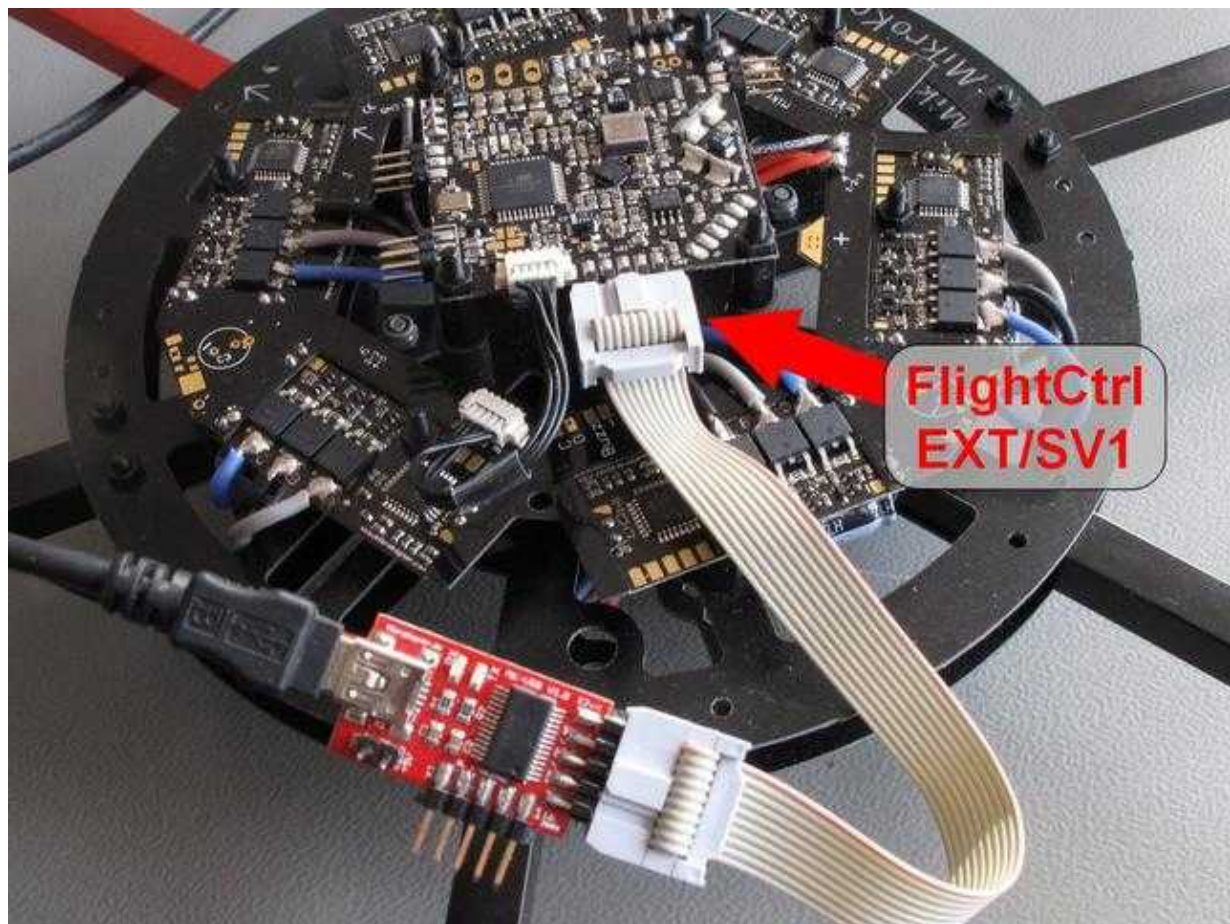
Connecting the modules

To provide the individual boards with new software, there are two possibilities:

- Either the [MK-USB](#) is attached to the Kopter/[MK-Tower](#).
- Or the [MK-USB](#) is connected directly to the relevant board.

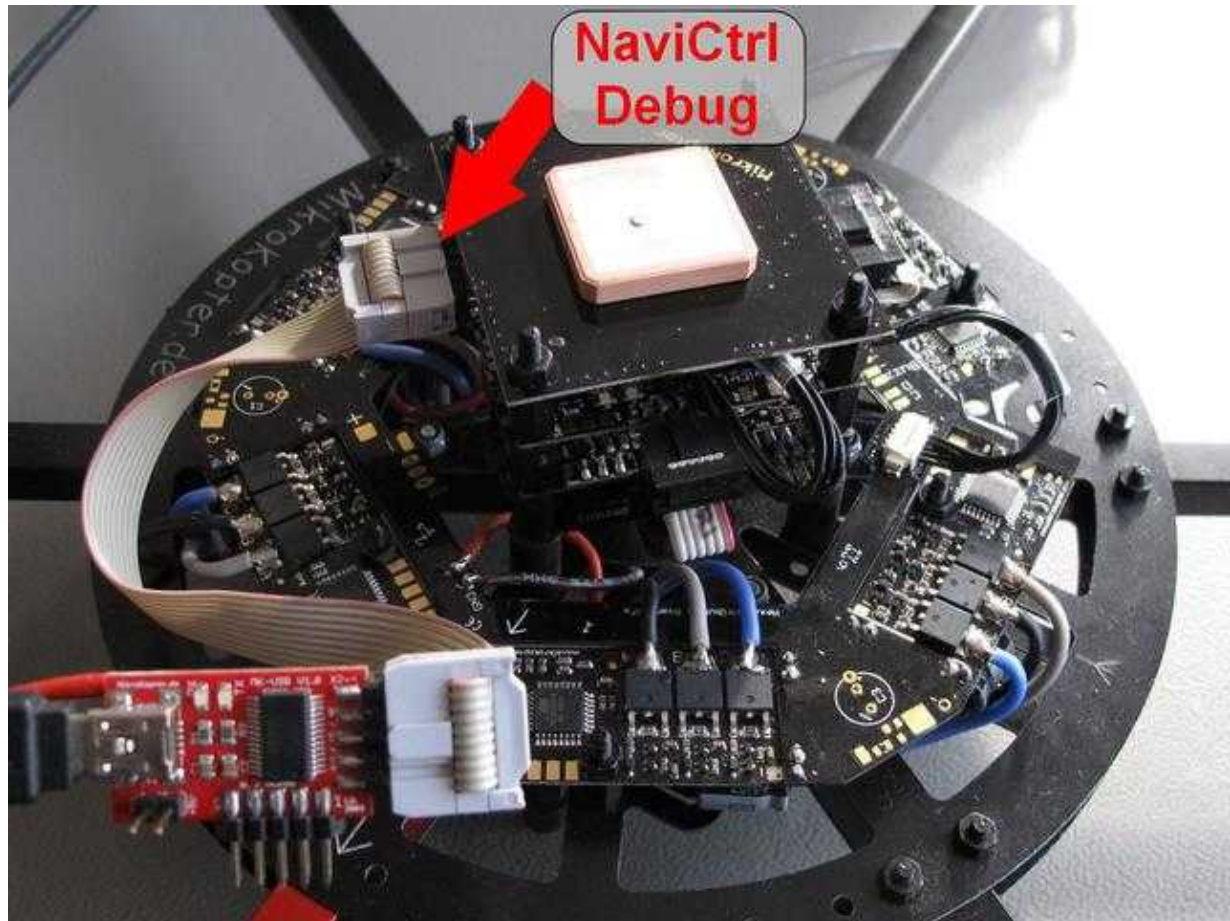
Connection example at MikroKopter / MK-Tower

Is only the [FlightCtrl](#) installed, the MK-USB is plugged into the 10-pin interface "EXT/SV1" of the [FlightCtrl](#).





However, if the [MK-Tower](#) is used at the [MikroKopter](#) (FlightCtrl, NaviCtrl, MK3Mag, MK-GPS), the FlightCtrl and the NaviCtrl are connected over a 6-pin and one 10-pin cable.

The [MK-USB](#) is plugged into the 10 pole interface "Debug" at the [NaviCtrl](#).




The jumper on the MK-USB is still open. To power the [MikroKopter](#), please use the lipo or a power supply. A regulated power supply is particularly recommended for the first start of the [MikroKopter](#) to avoid damage to the Kopter which could occur due to a soldering / assembly error.

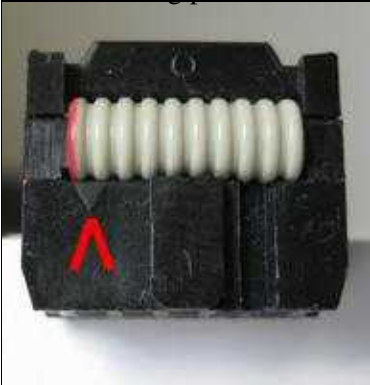
 If the jumper on the MK-USB is closed and no power supply (Lipo / AC adapter) is applied, the modules can be detected but it can lead to errors in the [KopterTool](#) (e.g. a I2C error) or to programming interruptions.

 **Attention:** An update of the BL-Ctrl is over the MikroKopter/MK-Tower **NOT** possible!
For an update or to control the software version, the BL-Ctrl must be connected directly to the MK-USB. Even if you have an error on a BL-Ctrl. To read the error code from the BL-Ctrl, the BL-Ctrl must be connected directly to the MK-USB.
(see: Connecting individual modules)

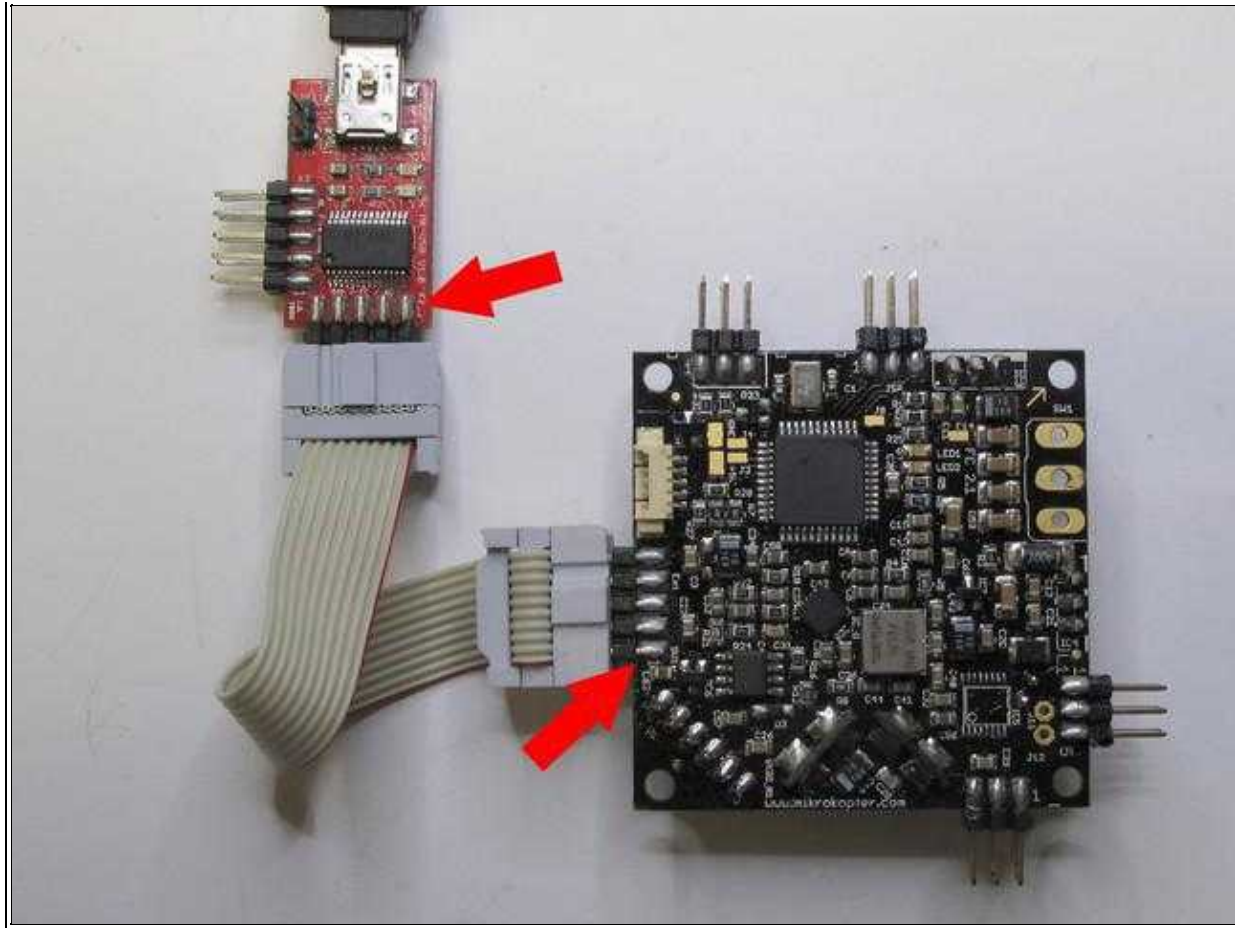
Examples for connecting individual modules


Each module can also be updated if you connecting it directly to the [MK-USB](#). Here are some examples of how the modules can be connected to the MK-USB:

 The 10pole ribbon cable must be hooked up with the connector "1" (red marked side) to the connector "1" of the individual module board!
The connecting pin "1" is marked on the board.




The red arrows are marking pin "1"	
FlightCtrl:	NaviCtrl:



 If the boards, as shown in the pictures, are individually connected, the voltage supply is supported by the MK-USB.

Therefor the jumper on the MK-USB has to be closed.

 For an Update the new BL-Ctrl V3.0 are also connected on the front pin strip of the MK-USB.

The Updates

FlightCtrl / NaviCtrl / MK3Mag

After the Kopter / the modules are connected over the the [MK-Tower](#) (or Sercon) to the [KopterTool](#), everything is ready for an update.

-  If the MK3Mag is directly connected to the MK-USB, take care that the connection between the jack of the ribbon cable and

the MK3Mag connector is correctly.

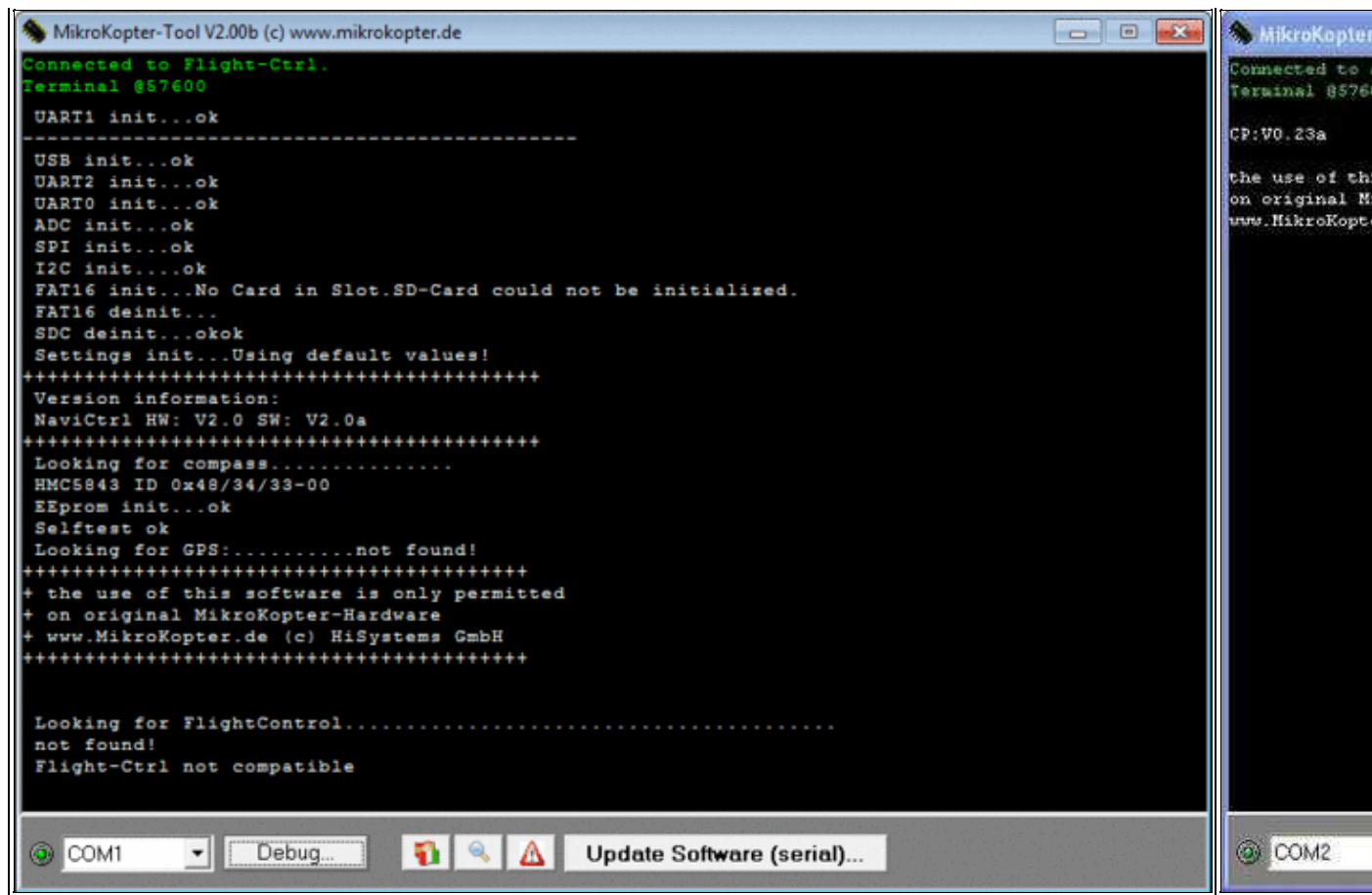
If the 10-pin plug connector of the MK3Mag is to short, you doesn't have a connection and you can't update it.

After you power on the board, you see this in the terminal window of the [KopterTool](#):

<div><div>Display Tower</div><div>(FlightCtrl + NaviCtrl + Compass + GPS)</div></div> <div><div>MikroKopter-Tool V2.00b (c) www.mikrokopter.de</div><div>Connected to Flight-Ctrl. Terminal @57600</div><div>UART1 init...ok ----- USB init...ok UART2 init...ok UART0 init...ok ADC init...ok SPI init...ok I2C init...ok FAT16 init...No Card in Slot.SD-Card could not be initialized. FAT16 deinit... SDC deinit...okok Settings init...Using default values! +++++ Version information: NaviCtrl HW: V2.0 SW: V2.0a +++++ Looking for compass..... HMC5843 ID 0x48/34/33-00 EEProm init...ok Selftest ok Looking for GPS:..... V5.00 HW:00040001 Configuring GPS done +++++ + the use of this software is only permitted + on original MikroKopter-Hardware + www.MikroKopter.de (c) HiSystems GmbH +++++ Looking for FlightControl..... FC V2.0a HW:2.1 Timer2 init...ok</div><div>COM1 Debug... Update Software (serial)...</div></div>	<div><div>Display Flight</div><div>(single connection)</div></div> <div><div>MikroKopter-Tool V2.00b (c) www.mikrokopter.de</div><div>Connected to Flight-Ctrl. Terminal @57600</div><div>----- FlightControl Hardware:2.2 Software:V2.0 the use of this software is only permitted on original MikroKopter-Hardware www.MikroKopter.de (c) HiSystems GmbH ----- Using Parameters Mixer-Configuration ----- Found BL-Controller !! MISSING BL-Controller !! MISSING BL-Controller !! MISSING BL-Controller !! MISSING BL-Controller ----- Calibrating Flight-time Batt: 4 Cells Receiver: Hitec HS-30X #dkBM=C=====</div><div>COM1</div></div>
--	---

(Zum Vergrößern -> Bild anklicken)

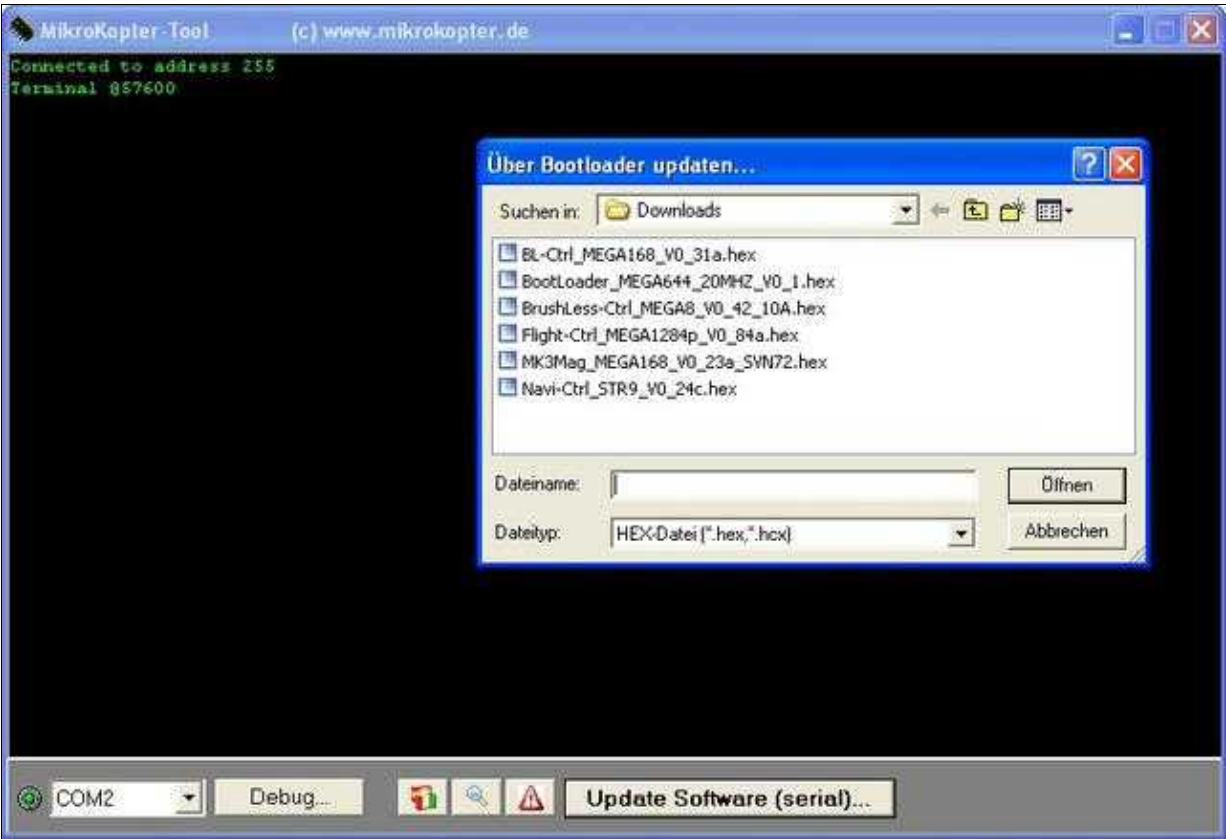
<div><div>Display NaviCtrl</div><div>(single connected)</div></div> <div></div>	<div><div>Display MikroKopter</div><div>(single connection)</div></div> <div></div>
---	---



(Zum Vergrößern -> Bild anklicken)

Through a "click" on the button *Update Software (serial)...* the selection window will open up.

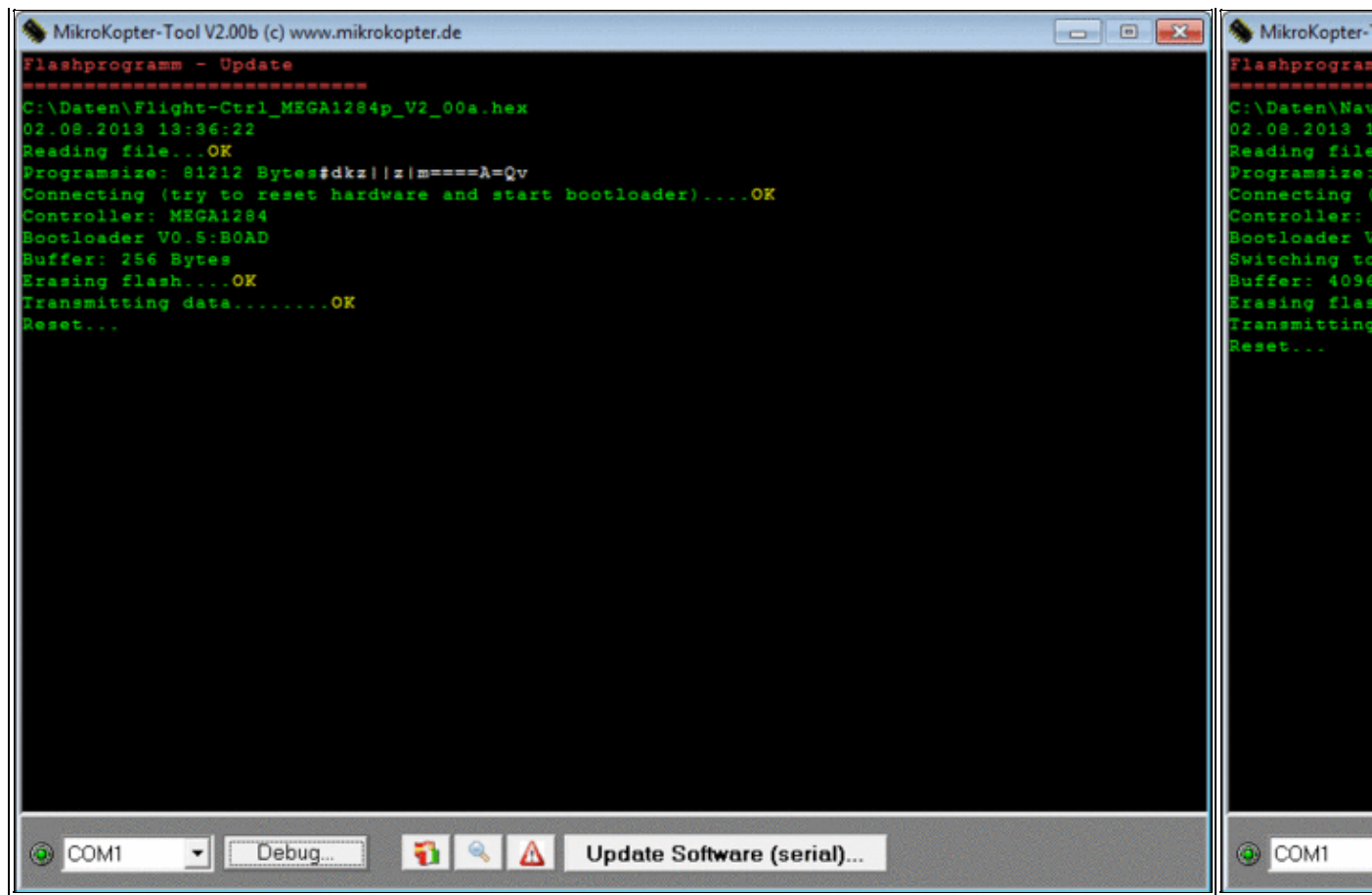
There you can chose the software for your unit:



(Zum Vergrößern -> Bild anklicken)

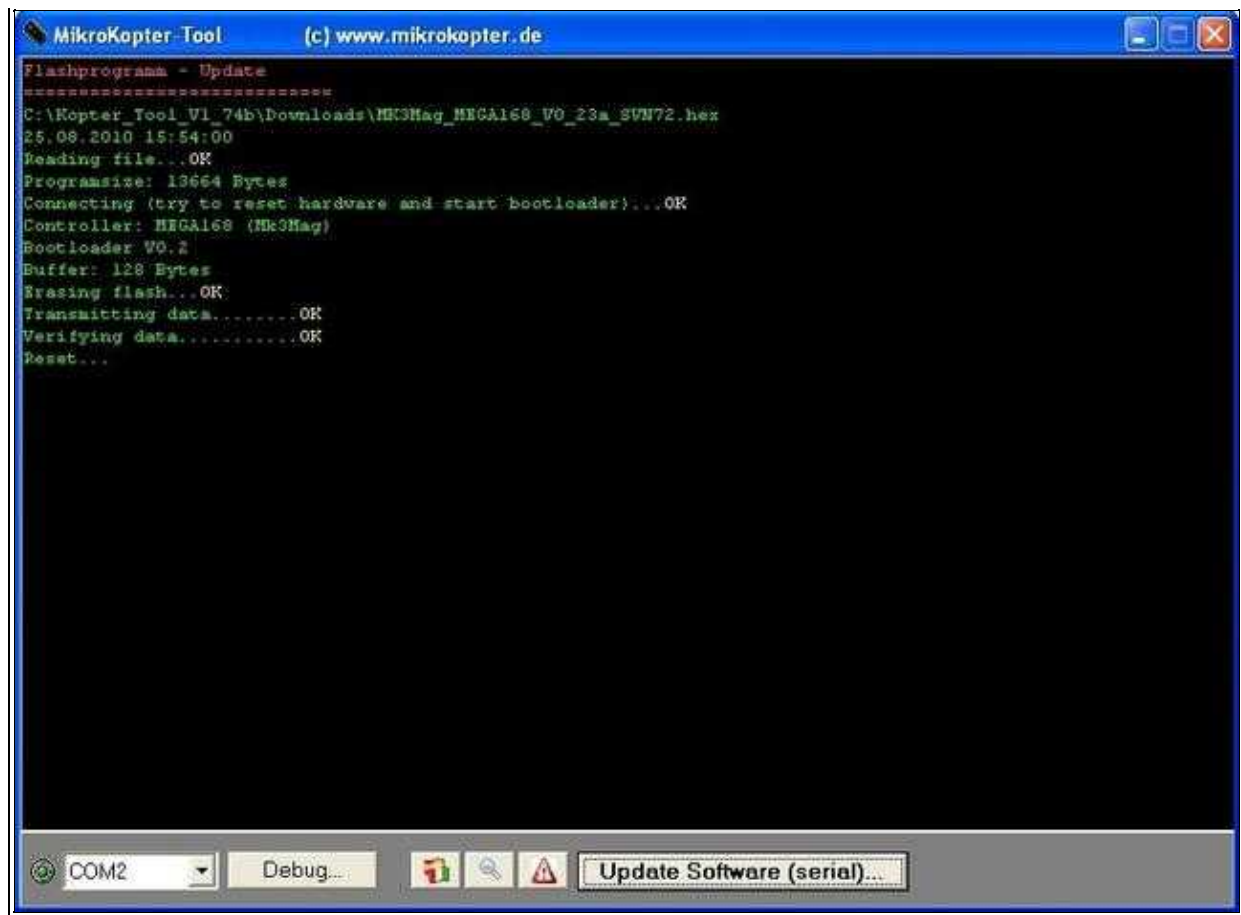
With a "click" on *open* the update will start:

Display Update FlightCtrl	Display Upd



(Zum Vergrößern -> Bild anklicken)


Display Update MK3Mag



(Zum Vergrößern -> Bild anklicken)

After the update an automatic reset is performed and the unit restarts. In the Terminal Window you can see now the initialization of the module.

The initialization looks like as shown in the pictures above.

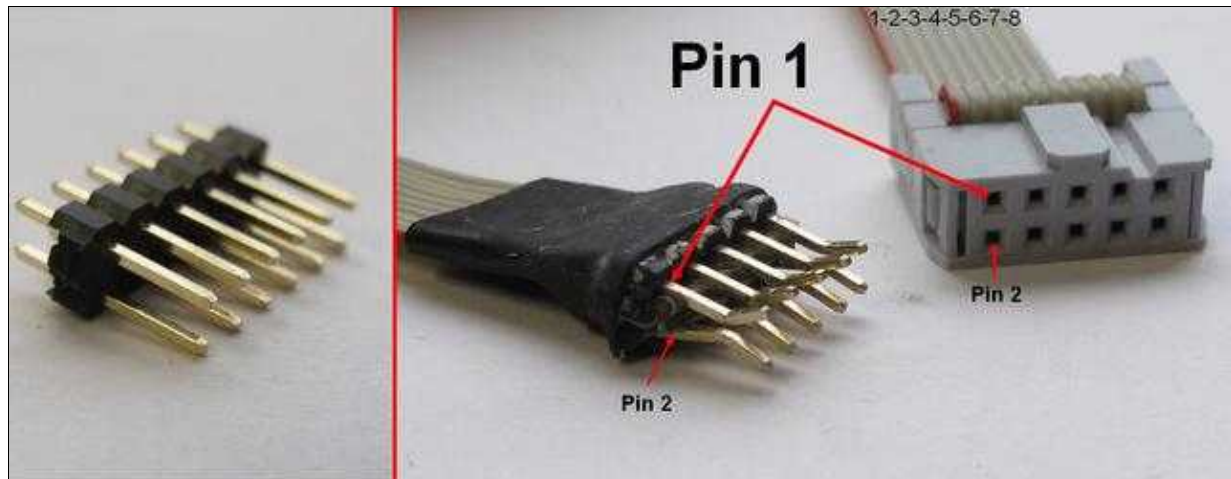
 It may be that after running the initialization characters like (# D ===== rwerEW == == fesf etc.) are displayed in the terminal. This is normal and not an error.

BL-Ctrl


For an update (or the display of any error messages at the BL-Ctrl), the BL-Ctrl must be connected right on the side of the MK-USB (or at the Sercon).

For this purpose a Slot-connector can be used or a pin-connector built by yourself. (See also: [Connect BL-Ctrl to MK-USB](#)).

It could look like in this way:




(Zum Vergrößern -> Bild anklicken)

 The upper bar contains the odd numbers, the lower the even numbers.

Another possibility:

The four required lines, for Rx (Pin 8), Tx (pin 3) Gnd (Pin 10) and +5 V (pin 2) can temporarily soldered directly to the regulator.

The power will be supplied via the MK-USB and a closed jumper.

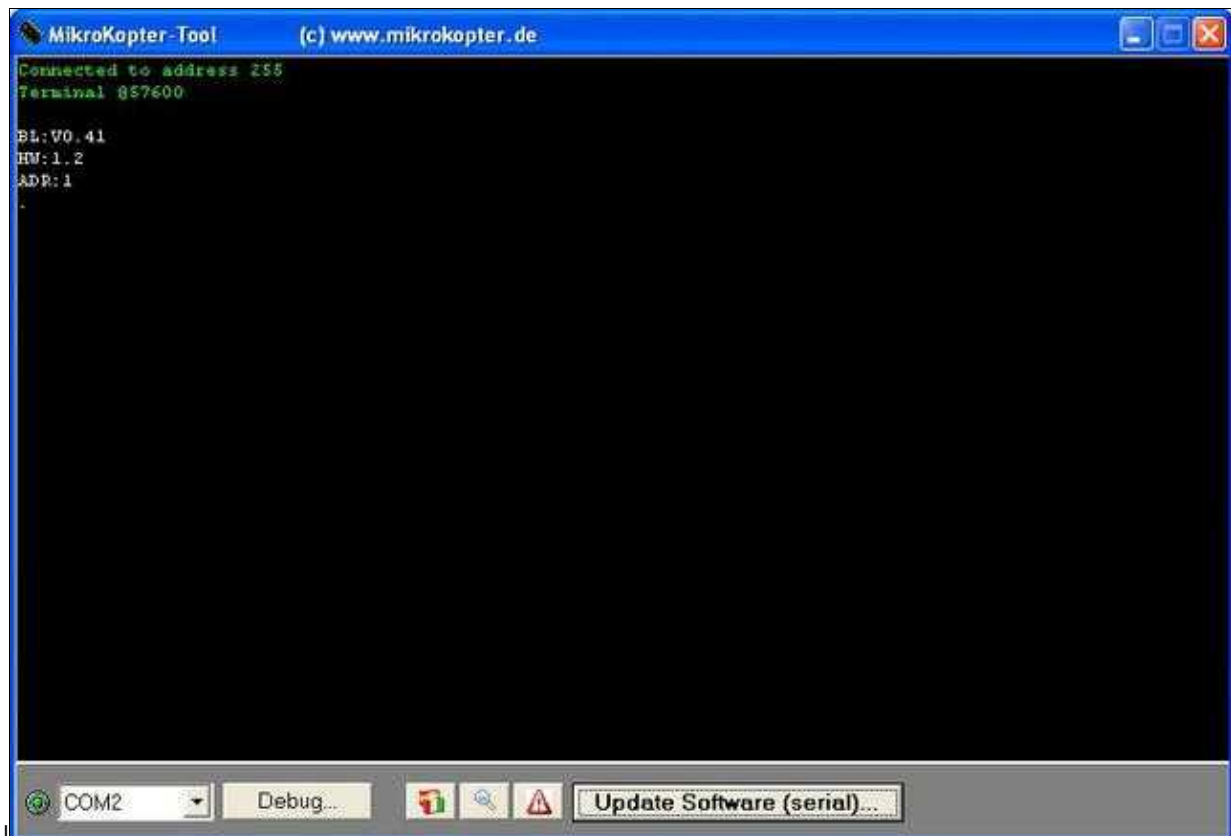
 **ATTENTION:** If the BL-Ctrl is still mounted in the Kopter, power can be supplied with the lipo or an external power supply. In this case the jumper on the MK-USB must be open.

Please Note: You have to disconnect the [FlightCtrl](#) if the BL-Ctrl are still mounted on the Kopter.

Is the BL-Ctrl over the [MK-USB](#) (or Sercon) connected with the [KopterTool](#), everything is ready for an update.

After powering the BL-Ctrl you will see this in the terminal window of the [KopterTool](#):

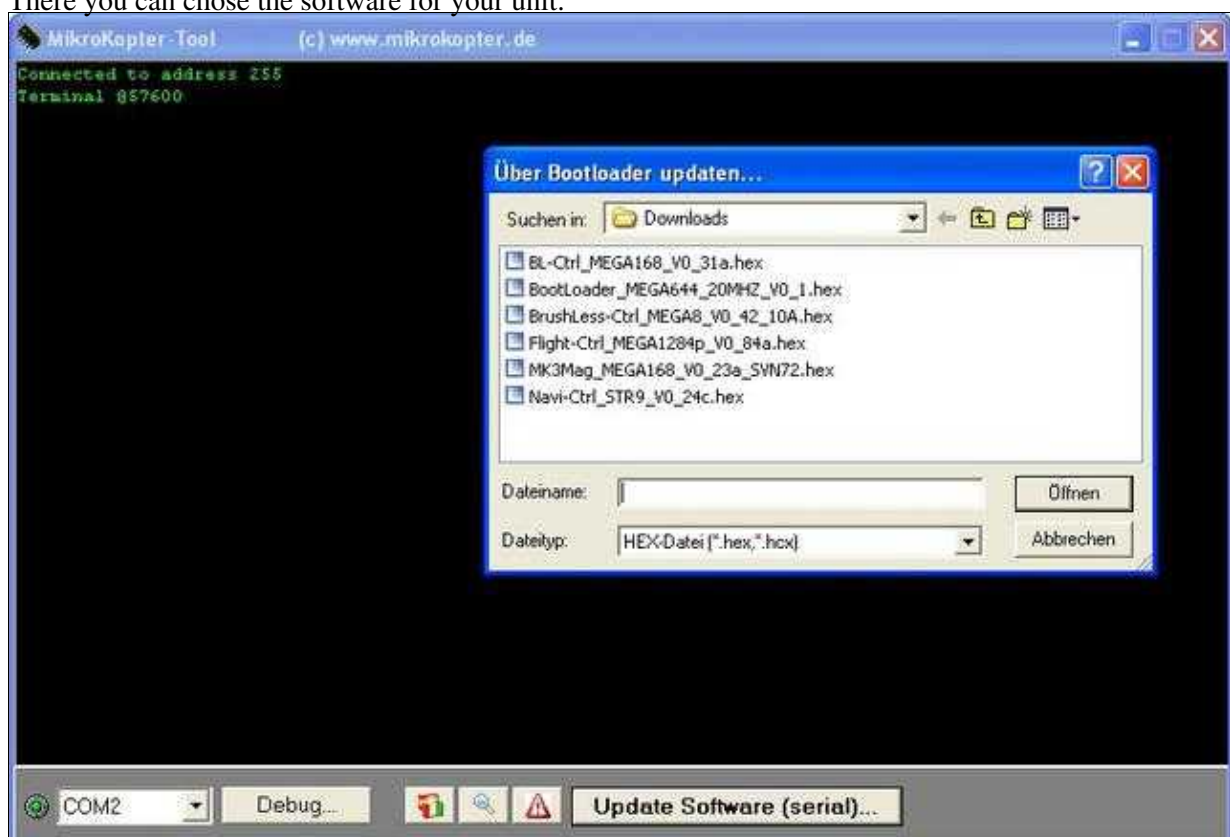
Display BL-Ctrl 1.2	Display BL-Ctrl 2.0
---------------------	---------------------



|| (Zum Vergrößern -> Bild anklicken)

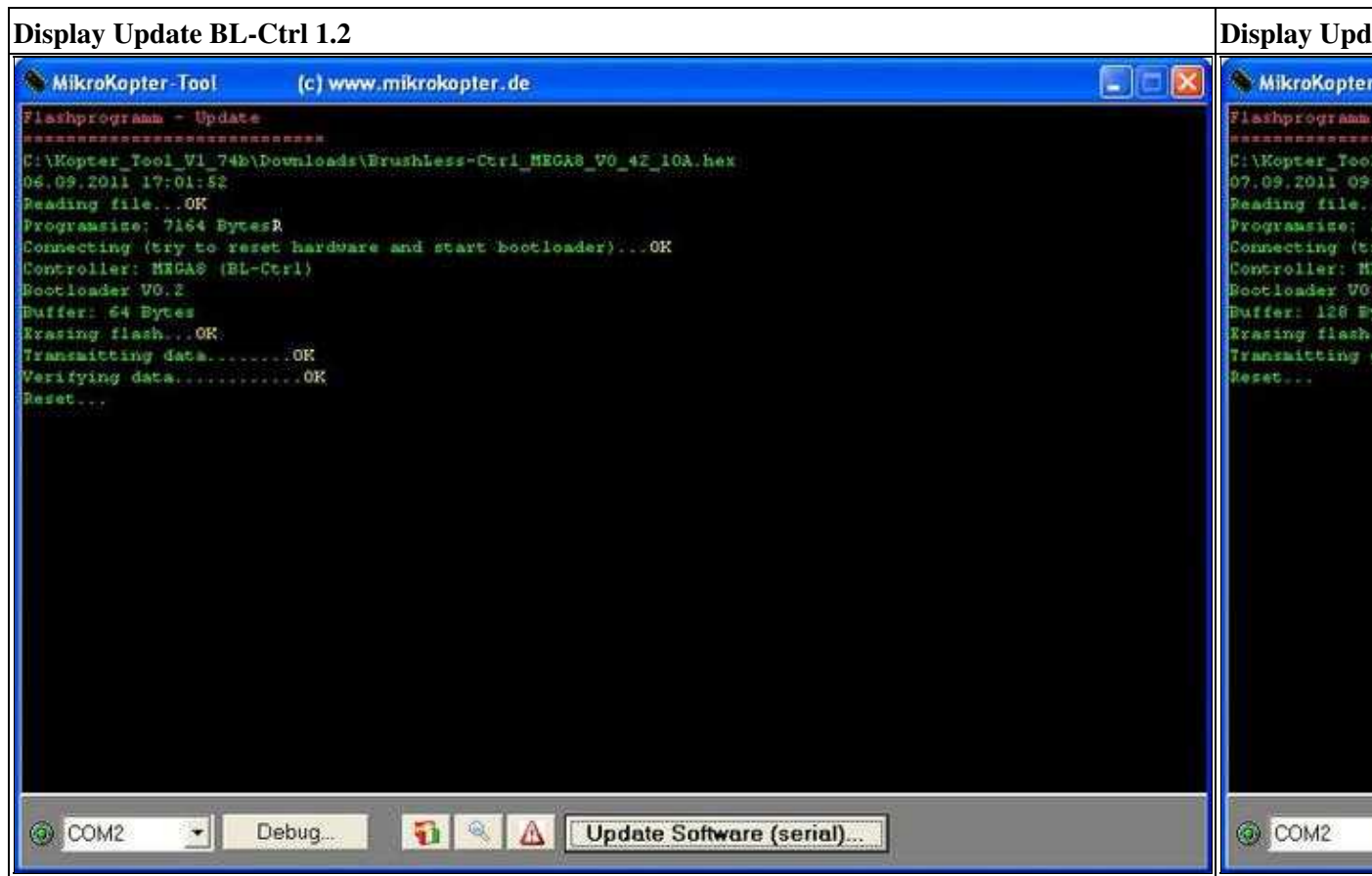
Through a "click" on the button *Update Software (serial)...* the selection window will open up.

There you can chose the software for your unit:



(Zum Vergrößern -> Bild anklicken)

With a "click" on **Open** the update will start:



(Zum Vergrößern -> Bild anklicken)

After the update an automatic reset is performed and the unit restarts. In the Terminal Window you can see now the initialization of the module.

The initialization looks like as shown in the pictures above.

Update failed - what now?

If an update failed or is cancelled during the transfer, the software on the processor is cleared or useless.

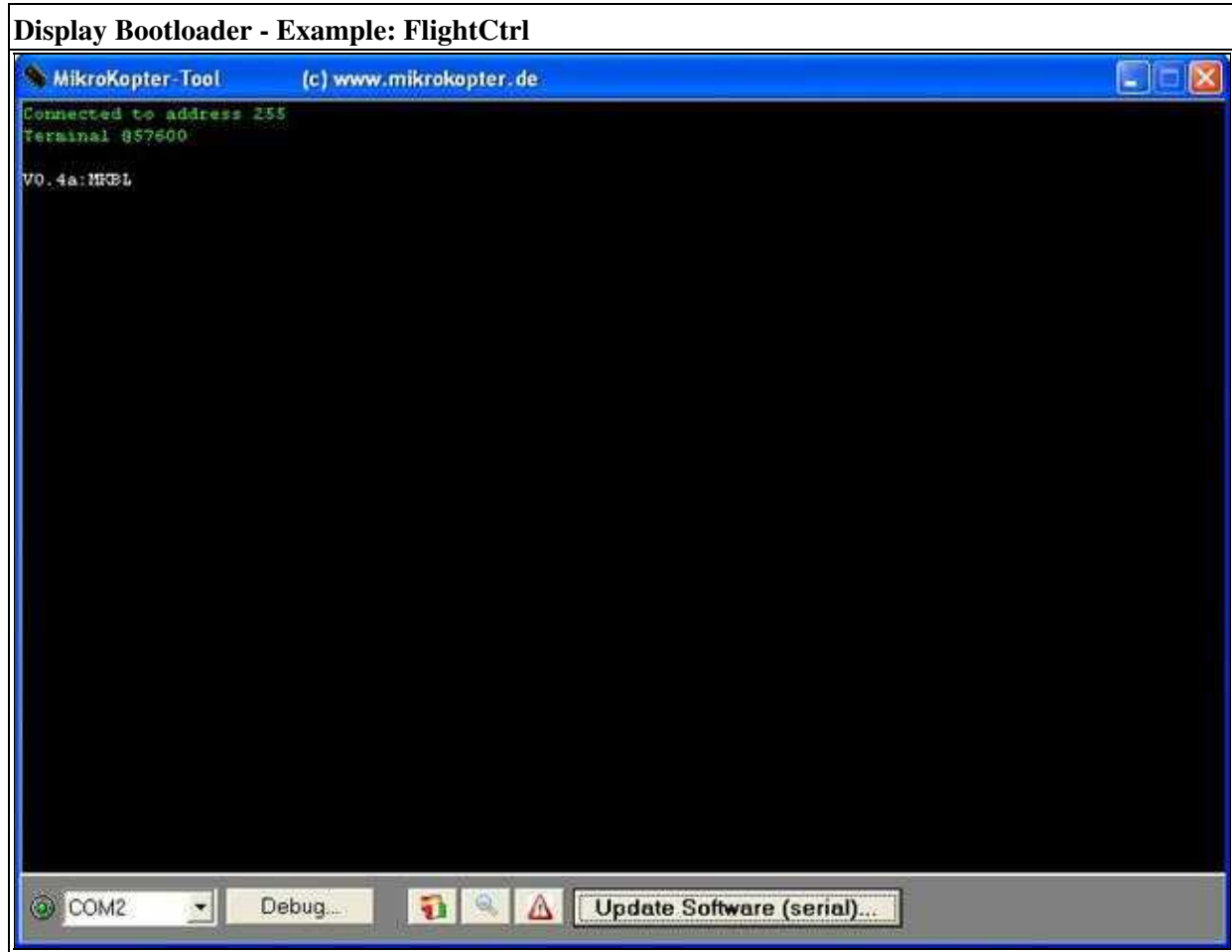
Thereafter, the board has maybe no function anymore and the lights are off.

Also it can happen, that the buzzer (if connected) will continuous beeping.

BUT DON'T PANIC!: The Bootloader is still there.

When reconnecting the module (or immediately after a failed update) the bootloader will be displayed instead of the initialization of the software:

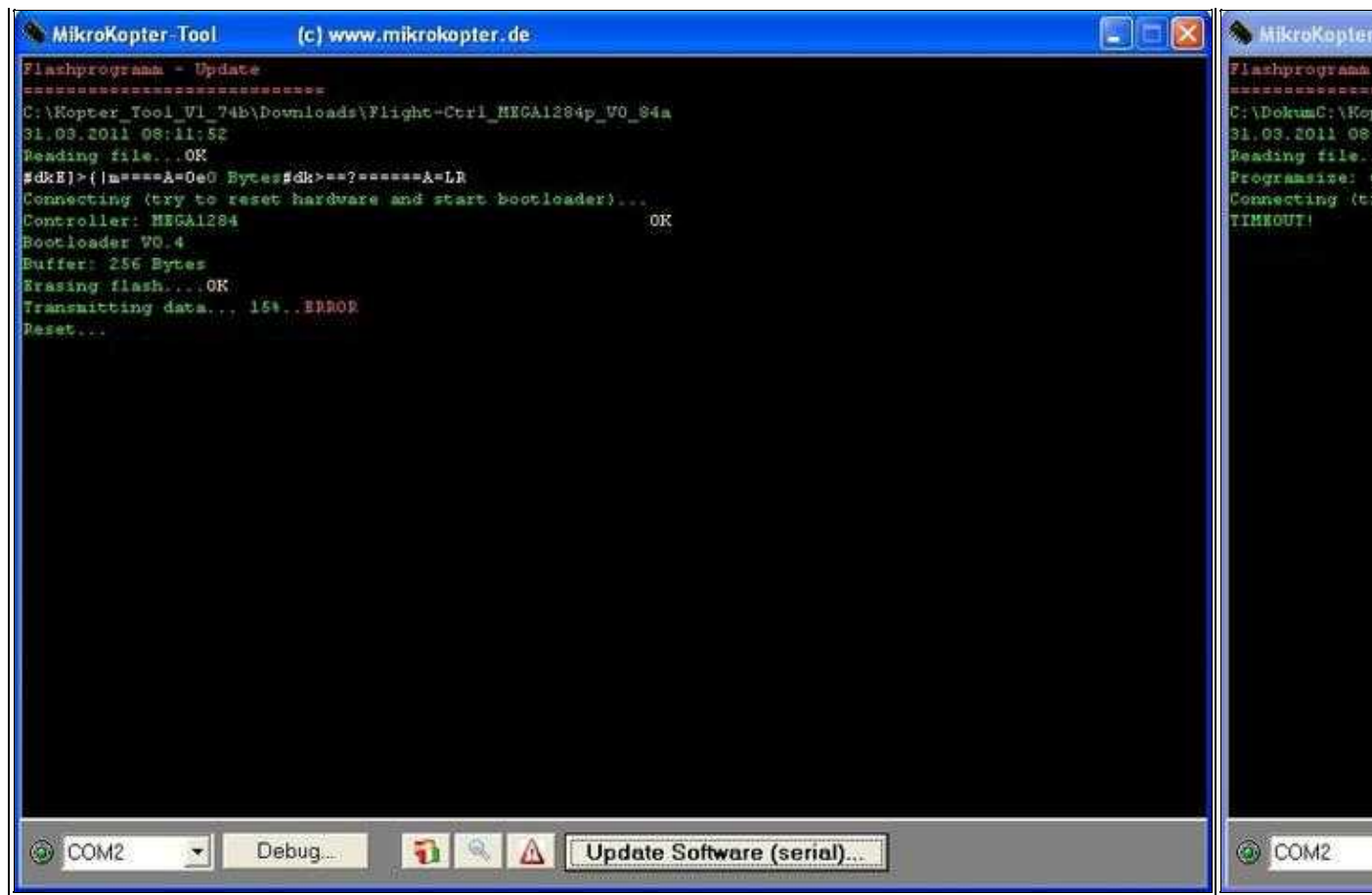
(In rare cases, the bootloader is not displayed, although this is still available!)



(Zum Vergrößern -> Bild anklicken)

A faulty update usually looks something like this:

Example of failed updates:



(Zum Vergrößern -> Bild anklicken)

What can be checked first? The following can be the cause:

File corrupted

It can be that way that the download of the software file was corrupted and therefore the file itself is damaged. In review of the file is in the terminal window the update to see from the program path of the file:

```
Reading file...OK
Programsize: 63070 Bytes
```

Here must after the **Reading File...** a **OK** been displayed and the respective program size (e.g. **Program Size: 63 070 bytes**) should be displayed.

If you see something else, downloaded the file again.

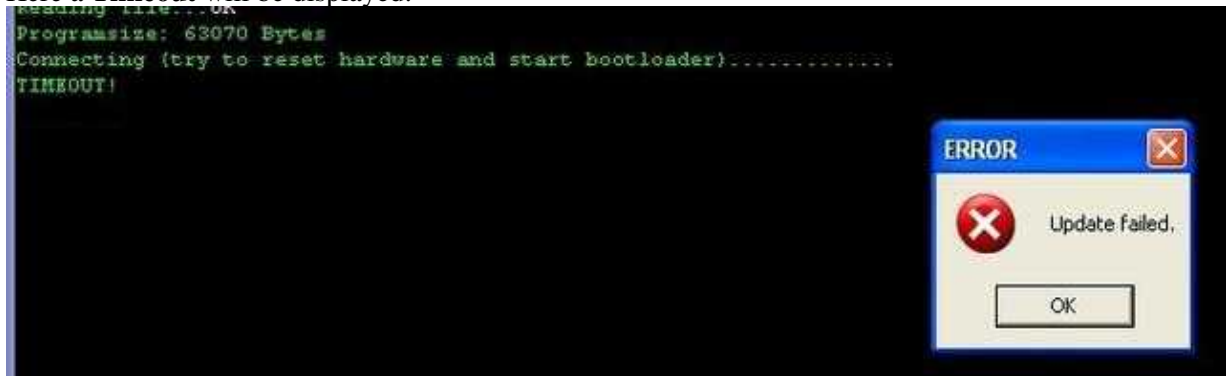
Or there is a Connection problem

Please use a Windows PC / Laptop. If you use a MAC or Linux PC with an EMU program you can have problems during the update.

If you use a Laptop and if you use the Jumper on the MK-USB to power up the PCB's, the 5V of the USB port can break down. This can also clear the software on the PCB.

Or if you use a wireless connection between Kopter and PC. Also here the connection can get lost and clear the Software.

Here a **Timeout** will be displayed:



Solution after faulty update

If the Software is lost after a faulty update and you can not update the PCB again, please try as described here.

For the following example, the boards are mounted on the MikroKopter and we power up the PCB's via the [LiPo](#).

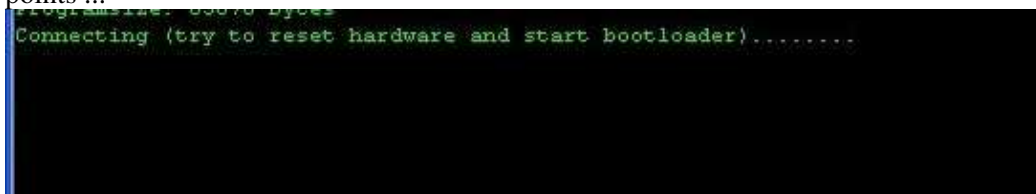
INFO: Remove the Propeller from the copter that he can not start if something goes wrong.

IMPORTANT:

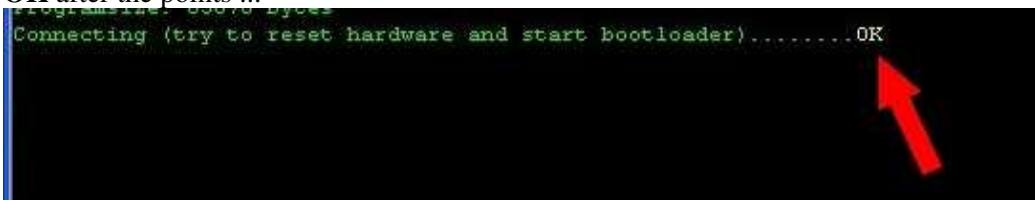
- Use a Windows PC / Laptop.
- Use a MK-USB ([Link](#)).
- Do not close the jumper on the MK-USB!
- To power up the PCB'S we use the LiPo or a power supply.
- It is assumed that the MK-USB was already in use on a Windows PC / Laptop and the required drivers and the correct COM port is set in the KopterTool.

The Update:

- Download the latest Software Version here: [Link](#).
- Connect the MK-USB with the PC and directly with the PCB which is to be updated.
- Start the KopterTool and open the terminal window.
- Power up the PCB / Kopter (connect the LiPo).
- Start the update as usual.
- Now you see *Connecting (try to reset hardware and start bootloader)*. If there is no "OK" after ~3-4 points ...



- ... remove the power supply and connect it again (LiPo disconnect / connect). Now you should see an **OK** after the points ...



- ... and the update should go on.
- If it is not working at the first time - try it again.

If it is not possible to update the software again, please contact [HiSystems](#) to get a RMA Nr. that you can send the PCB back for a check.
