

## **en/BL\_V3\_Version**

25

LotharF  
MikroKopter.de

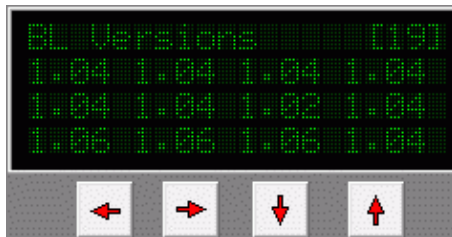
This page as an **PDF-Document**? Click on that Symbol and wait a little moment... --->

BL-Ctrl V3 - Software versions

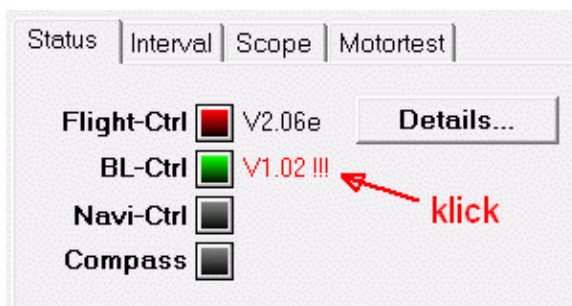
-  [deutsch](#)

## Versions

Since Firmware FC 2.06e, the version numbers are listed:



In case that there are different versions of BL-Firmware installed, the [KopterTool](#) (since V2.06e) shows the lowest version in the List:



-  we strongly recommend to update if the version Number is 1.00 or, 1.02 (red version number)!
-  Instruction to **update the BL V3** here: [Update](#)

## Firmware

Here you can find the latest versions for the BL-Ctrl V3:

[http://mikrocontroller.com/files/BL\\_V3](http://mikrocontroller.com/files/BL_V3)

## Version V1.10

Seit 23rd Sept 2014

- the motors are running even smoother at constant setpoint

## Version V1.08

since 18th July 2014

- Redundance: Timeout for reporting "No Redundance" reduced from 100 sek to 5 sek

- Default-Timing is 24° again
- Bugfix: There were still some commutation problems with some motors at high currents -> for example U5 (T-Motors) or KDE 4012/4014
- Note: If the BL is powered by the 5V of a MKUSB, the serial interface for debug Data is deactivated after selftest (blinking 6 times) - that is fixed in 1.08c

## Version V1.06

since 30th June 2014

- Redundance operation: some small bugfixes in communication
- some small changes in I2C-Data (not important for normal MK operation)
- Small cahnge in selftest procedure
- "ERR:Motor restart" at high current peaks the message "ERR:Motor Restart" could occure instead of "BL-Limitation"
- some motors lost commutation when driving at high currents
  - ◆ then comes the message "BL-Limitation" or "ERR:Motor Restart"
  - ◆ Timing 28° was improved for the case of commutation loss
- Since V1.06e -> default timing is now 28° (in V1.06d it was 24°)
- Note: If the BL is powered by the 5V of a MKUSB, the serial interface for debug Data is deactivated after selftest (blinking 6 times) - that is fixed in 1.08c

## Version V1.04c

since 07th May 2014

Download: [V1.04c](#)



- better protection against high current peaks during operation
- Safer behavior while operation without propellers
- Integrated watchdog that restarts the BL controllers in case of a failure
- Various bug fixes




this version is stable -> update is only nessecary if you have problems

## Version V1.02d


Since 17th March 2014

- Improved motor-start by a self-learning start phase
- internal speed limitation
- increased commutating speed (Max RPM is 200.000 devided by the number of magnets -> 16.666 RPM if you have 12magnets)
- Prepared for redundant FC-Operation

-  we strongly recommend to update to version 1.04c or higher

## Version V1.00f

Since 1st Jan. 2014

- First Version
  -  we strongly recommend to update to version 1.04c or higher
- 

- KategorieFirmware/FC